

Groundwater Basin Prioritization

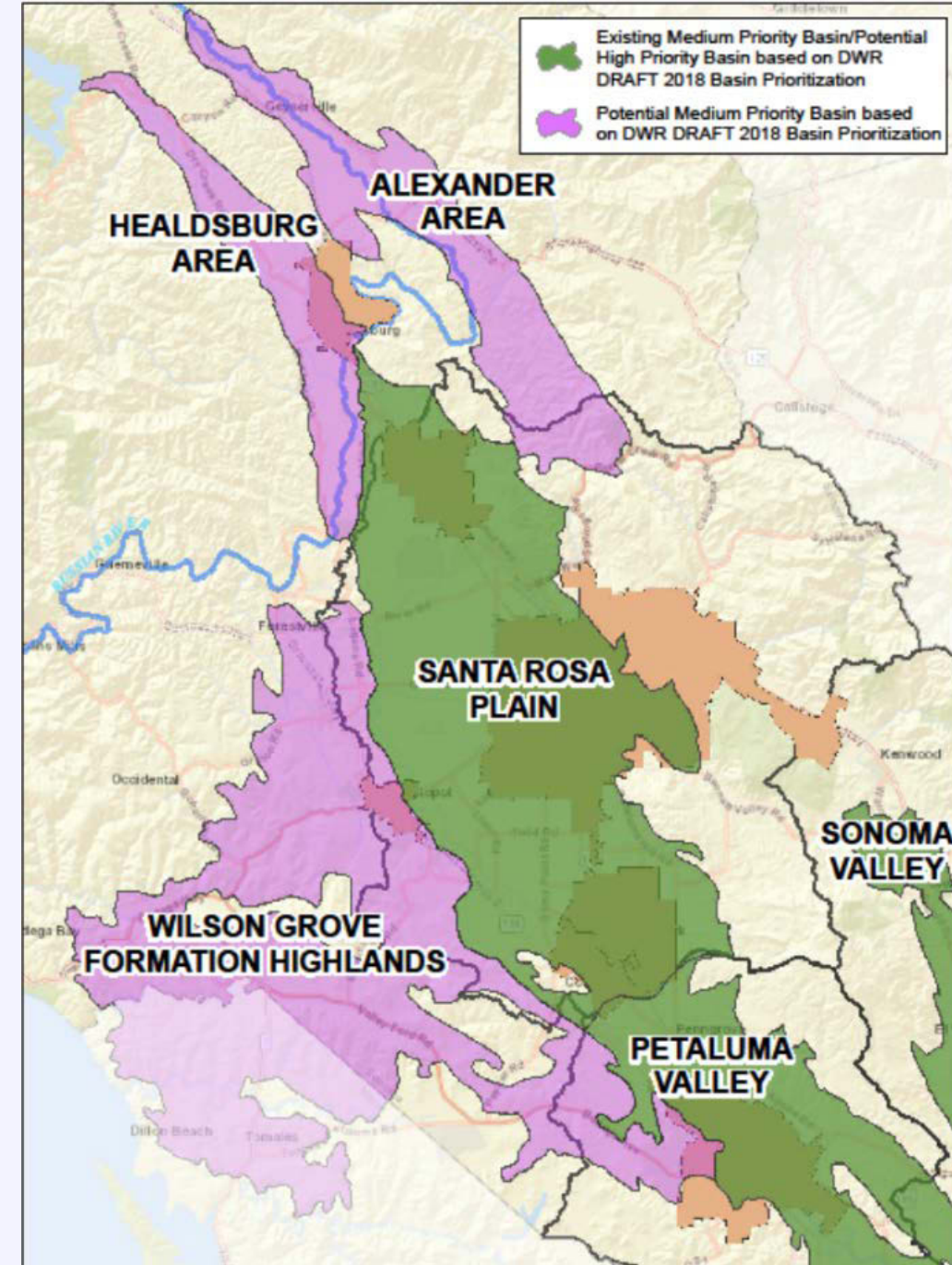
Santa Rosa Plain Groundwater Sustainability Agency
Board of Directors Meeting
June 14, 2018

Groundwater Basin Prioritization Overview

- **Conducted statewide by California Department of Water Resources (DWR) for all 517 groundwater basins and subbasins**
- **Initial Prioritization done in 2014 prior to SGMA**
- **DWR required to reassess prioritization whenever Bulletin 118 is updated**
- **2018 Prioritization Process conducted following 2016 Update to Bulletin 118.**
- **Changes from 2014 and DRAFT 2018 process relevant to Sonoma County:**
 - **Required to incorporate potential impacts to streamflow and habitat**
 - **Utilized additional available information and metrics**
 - **Changed methodology for ranking basin components**

2018 DRAFT Basin Prioritization

- **Three Existing SGMA Basins Elevated from Medium to High Priority**
 - Santa Rosa Plain Subbasin
 - Petaluma Valley Basin
 - Sonoma Valley Subbasin
- **Three Very Low Priority Basins Elevated to Medium Priority**
 - Alexander Area Subbasin of Alexander Valley
 - Healdsburg Area Subbasin (Dry Creek Valley and portion of Russian River Valley)
 - Wilson Grove Formation Highlands Basin



DWR Schedule for 2018 Basin Prioritization

Events	Dates*
Prioritization based on 2016 Basin Boundary Modifications	
Public Comment Period Opens	May 18, 2018
Webinar	May 30, 2018
Public Meetings	June 25-27, 2018
Public Comment Period Closes	July 18, 2018
Finalize Prioritization (based on 2016 Basin Boundary Modifications)	mid-October
Prioritization based on 2018 Basin Boundary Modifications	
Release of Draft Prioritization for Modified Basins	late October
Public Comment Period	November - December
Release of Final Prioritization (based on 2018 Basin Boundary Modifications)	February 2019
<i>*All dates are subject to change</i>	

Local DWR Public Meeting Planned for Tuesday, June 26 at 1pm in Healdsburg

Krug Event Center, Best Western Dry Creek Inn

198 Dry Creek Road, Healdsburg

Santa Rosa Plain DRAFT Prioritization Component Scoring

1. Population Density: 3 of 5
- 2. Population Growth Projection: 3 of 5 (previously 2 of 5)**
3. Public Supply Well Density: 5 of 5
- 4. Production Well Density: 5 of 5 (previously 3.75 of 3.75)**
5. Irrigated Acreage: 3 of 5
- 6. Groundwater Priority/Reliance: 3 of 5 (previously 2 of 5)**
- 7. Documented Impacts: 1 of 5 (previously 0 of 5)**
 - For Water Quality impacts
8. Habitat/Streamflow/Other Info: 0 of 5 (previously not incorporated)

Total Score of 23 (previously 18.8). Above 14 = Medium, Above 21 = High

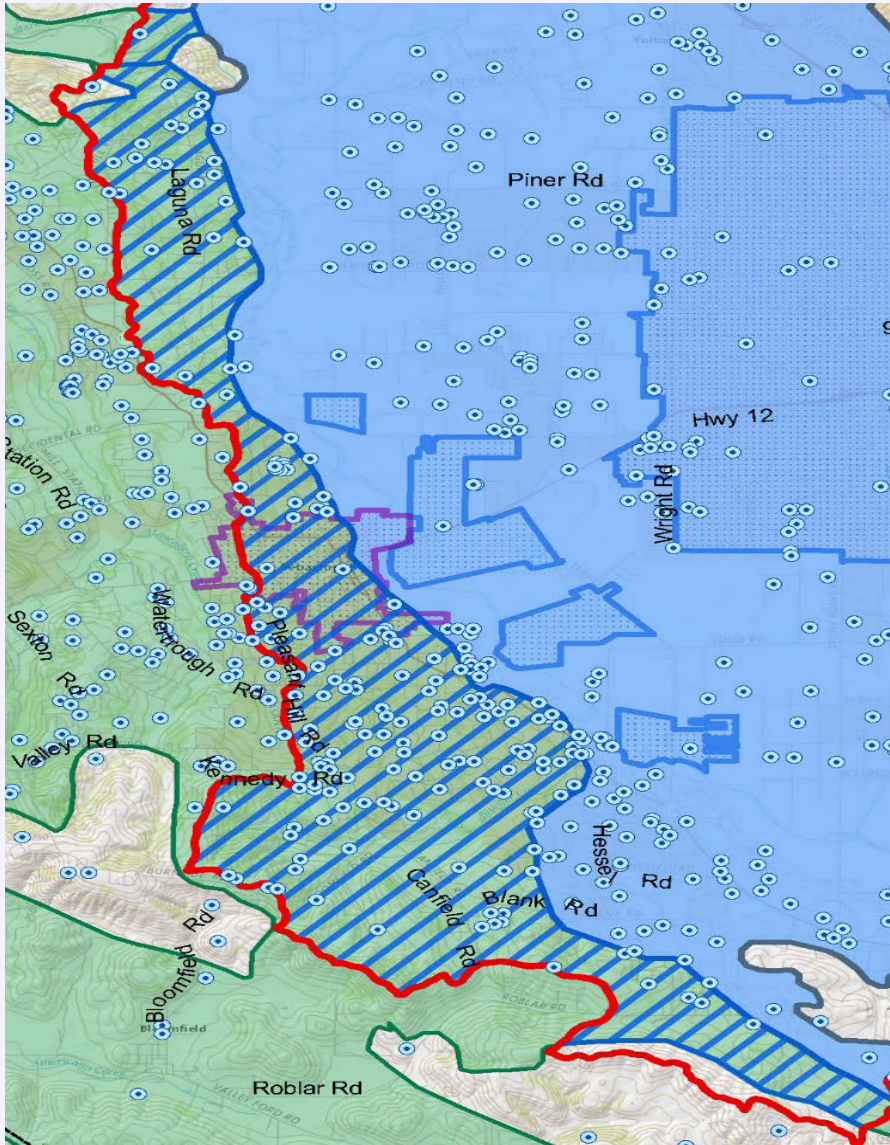
Bold denotes increase in component scoring between 2014 and 2018 DRAFTs.

Ongoing Activities/Next Steps

- Met with DWR Staff regarding DRAFT Results in late May
 - Local impacts of Prioritization
 - DWR willing to incorporate local information if more appropriate prior to finalizing prioritization
 - Discussed potential for Basin Boundary Modifications (window currently closes June 30)
- Reviewing methodology differences and statewide datasets applied to prioritization ranking
- Discussions with other local agencies impacted by potential changes in prioritization
- Developing comments to DWR on DRAFT Prioritization results in coordination with other local agencies, GSAs and advisory committees
- Assessing potential for Basin Boundary Modifications (by GSA and/or other local agencies)

Western Boundary Considerations

(from April 12 GSA Board Meeting - *italic/bold* denotes changed considerations)



Pros/Opportunities

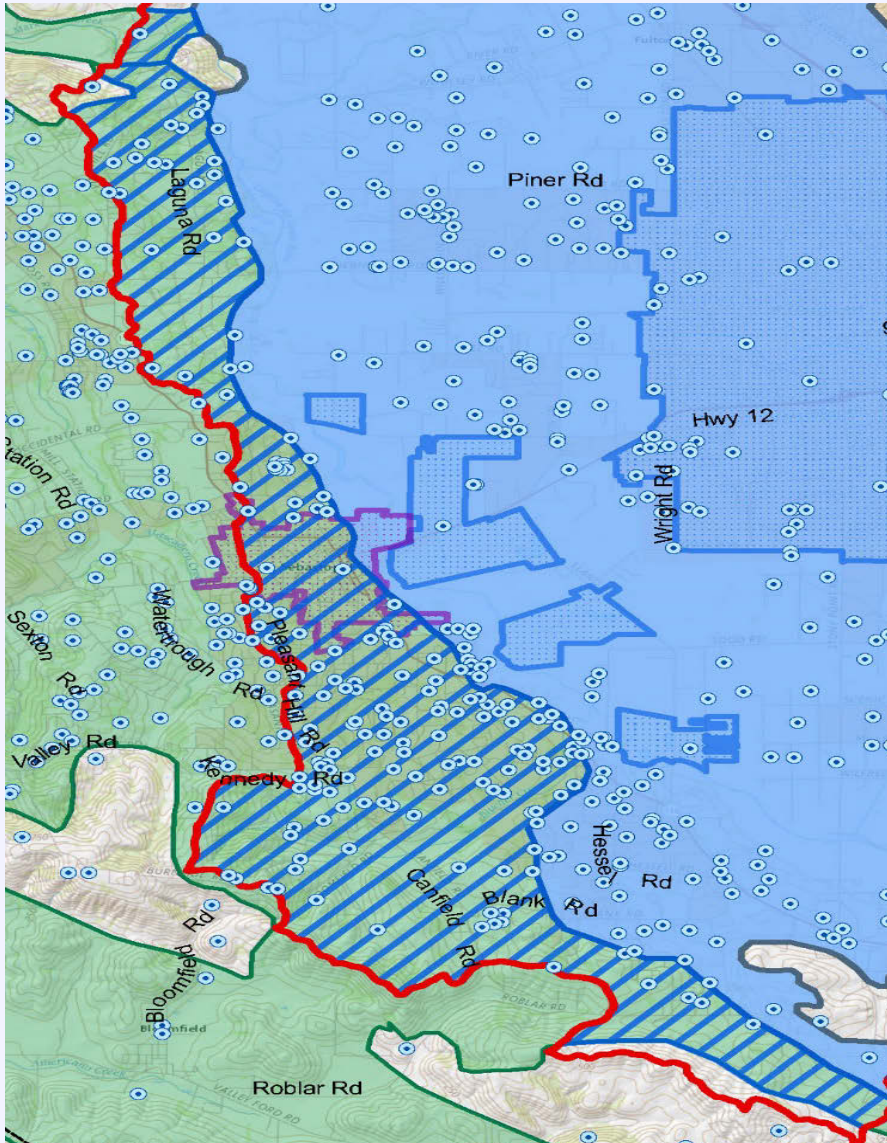
- Would add ability for GSA to manage, as part of it's jurisdiction, an area that is hydrogeologically interconnected with (and represents a source of inflow to) the Santa Rosa Plain B118 basin.
- Could lower any potential fees assessed to landowners within current Santa Rosa Plain B118 basin by spreading out costs over larger base of potential payers.
- **Could potentially result in lower prioritization for remaining Wilson Grove Formation Highlands Basin (currently being evaluated by staff)**

Western Boundary Considerations

(from April 12 GSA Board Meeting - *italic/bold* denotes changed considerations)

Cons/Challenges

- *Funding to make basin modification request (estimated at \$30,000 to \$60,000) is not included in GSA's FY16/17 Budget. **Recent discussions with DWR indicate that level of effort could be significantly lower with negligible budget impact.***
- *Resources would be diverted from work needed to initiate development of GSP. **Potentially minimal per above description***
- *Landowners/agencies/water systems that would be affected by modification may oppose the modification request, which would lead to uncertainty in DWR's acceptance of the request. City of Sebastopol Advisory Committee representative publically stated City's opposition. **Likely to be less opposition as modification would not change SGMA status. City of Sebastopol has sent letter stating desire for boundary modification and interest in participating in SRP GSA.***

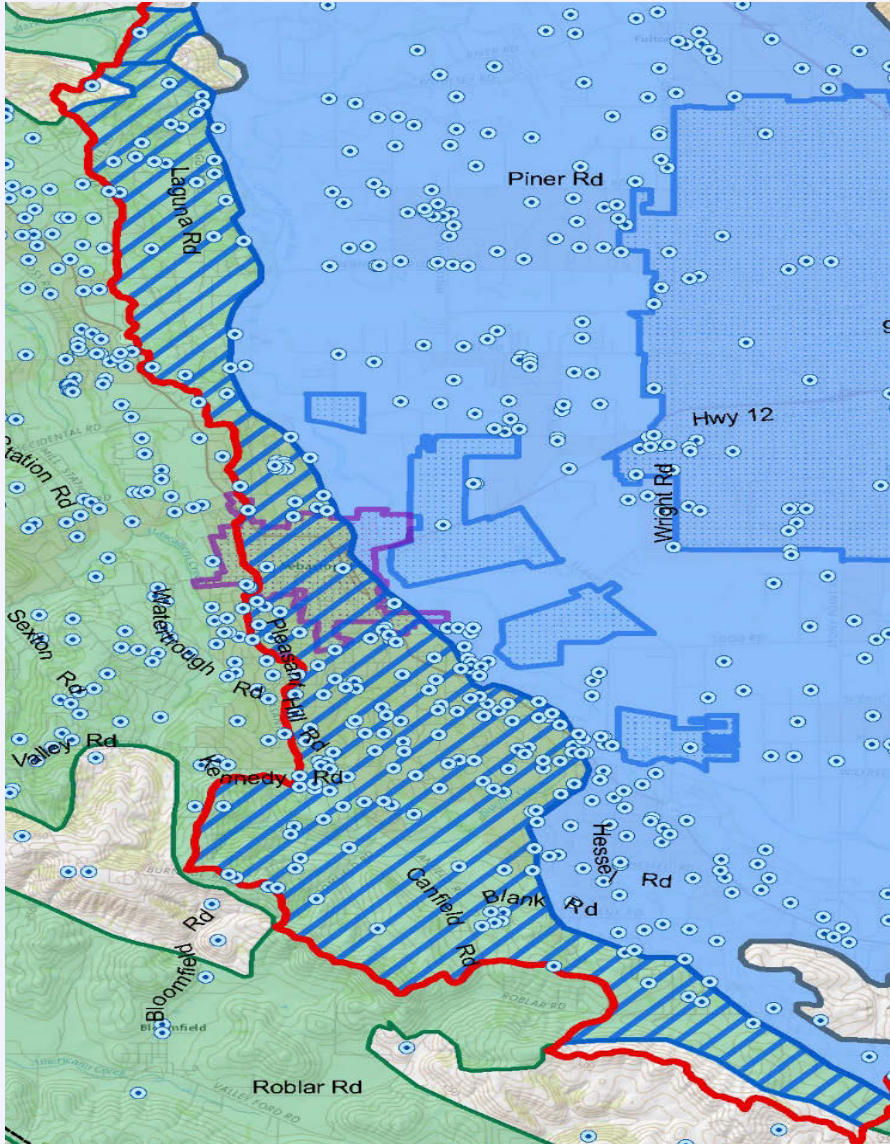


Western Boundary Considerations

(from April 12 GSA Board Meeting - *italic/bold* denotes changed considerations)

Cons/Challenges

- *Without additional data regarding location of western flow divide, uncertain whether DWR will accept technical basis for boundary modification. **Seeking guidance from DWR on level of technical information required. Jurisdiction boundary changes require less technical documentation.***
- Adding to the GSA's jurisdiction by expanding the Santa Rosa Plain B118 basin could potentially increase long-term costs to the GSA (associated with monitoring and managing this area).



Potential Actions

- Submit comment letters(s) to DWR;
- Submit a request to DWR for an extension of the deadline for Basin Boundary Modifications (currently June 30, 2018) to August 31, 2018;
- Should the lower level of effort in preparing and submitting a request be acceptable to DWR and supported by data analysis, prepare and submit a Basin Boundary Modification request to expand Santa Rosa Plain's western boundaries to the watershed line and to include the entire city of Sebastopol; and
- Should the City of Sebastopol request a jurisdictional basin boundary modification adding the City to the Santa Rosa Plain sub-basin, submit a support letter to DWR.